

Treatment of Non-Hodgkin's Lymphoma: State of the Art and Home *Brewed* Approaches

Relevant financial relationships in the past twelve months by presenter or spouse/partner.

Grant/Research Support: Celgene, Novartis, Takeda
Speakers Bureau: Celgene, Amgen, Seattle Genetics

The speaker will directly disclosure the use of products for which are not labeled (e.g., off label use) or if the product is still investigational.



18th Annual Advances in Oncology – 2017



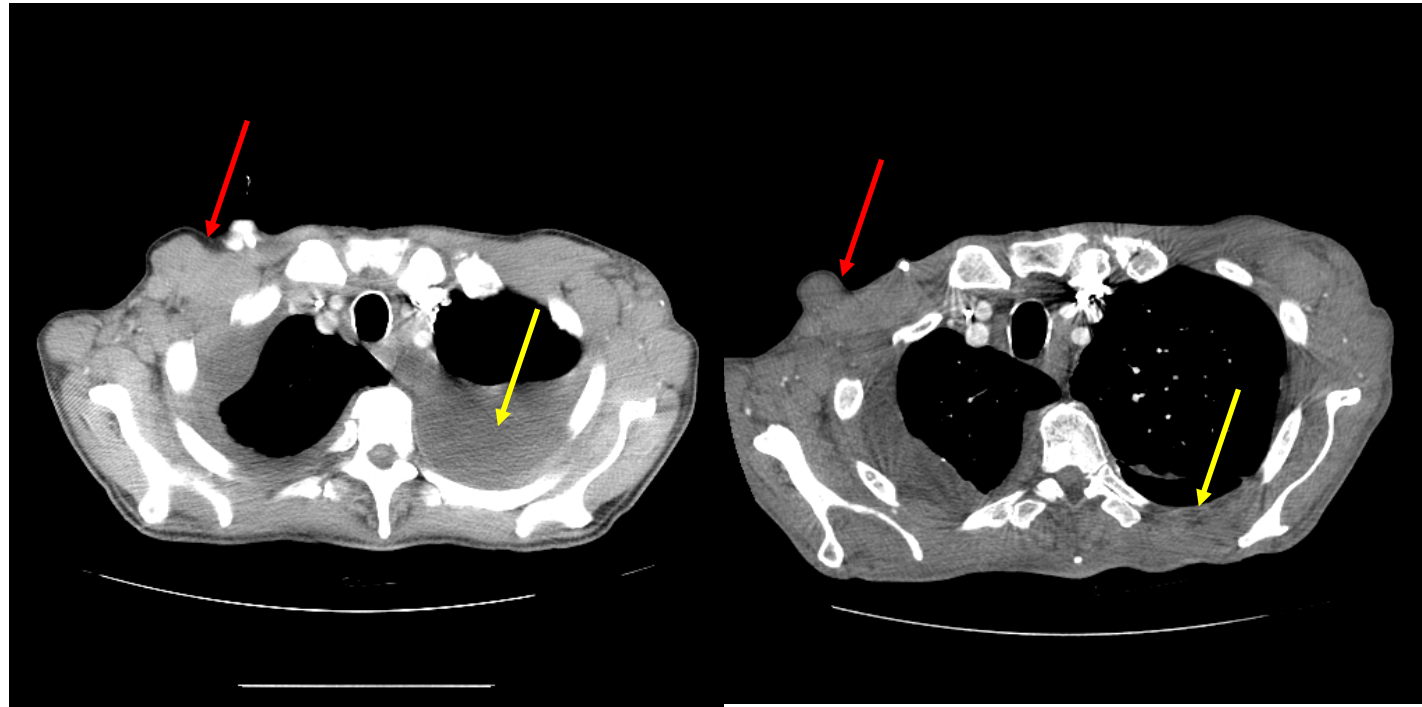
The Magic of Fermentation



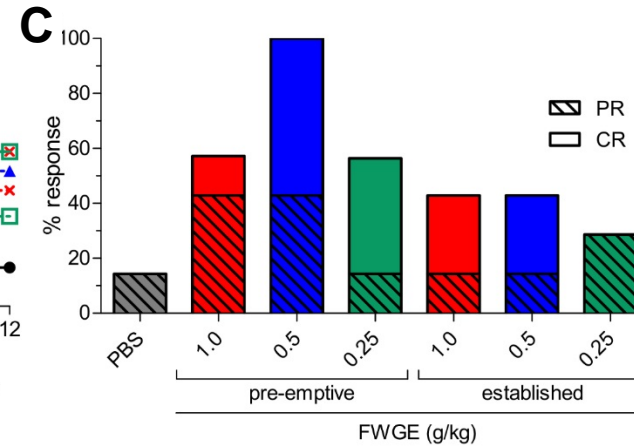
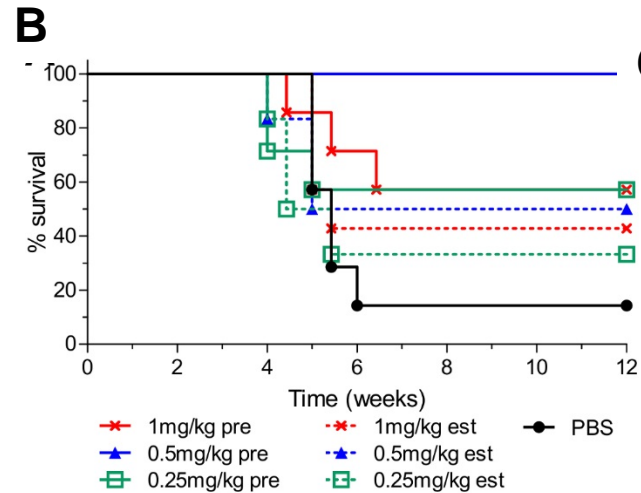
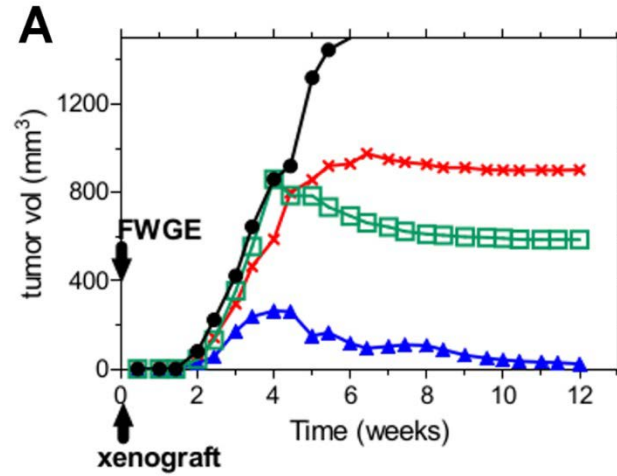
An Enlightening Case

- ND, a 77 y/o male with Stage IV mantle cell lymphoma
 - extensive bulky disease in nearly all nodal stations
 - adamantly opposed to chemotherapy
 - over a 2-3yr period had tried a number of alternative treatment approaches.
- presented to consultation
 - bilateral pleural effusions
 - left chest wall mass
 - bulky inguinal adenopathy
 - dyspneic and appeared cachectic
- continued to refuse chemotherapy and insisted on initiating therapy with fermented wheat germ extract (also known as **MSC**).

Follow-up of ND



FWGE Pre-clinical Efficacy in Burkitt's Xenograft Model



In-house Production of Fermented Wheat Germ

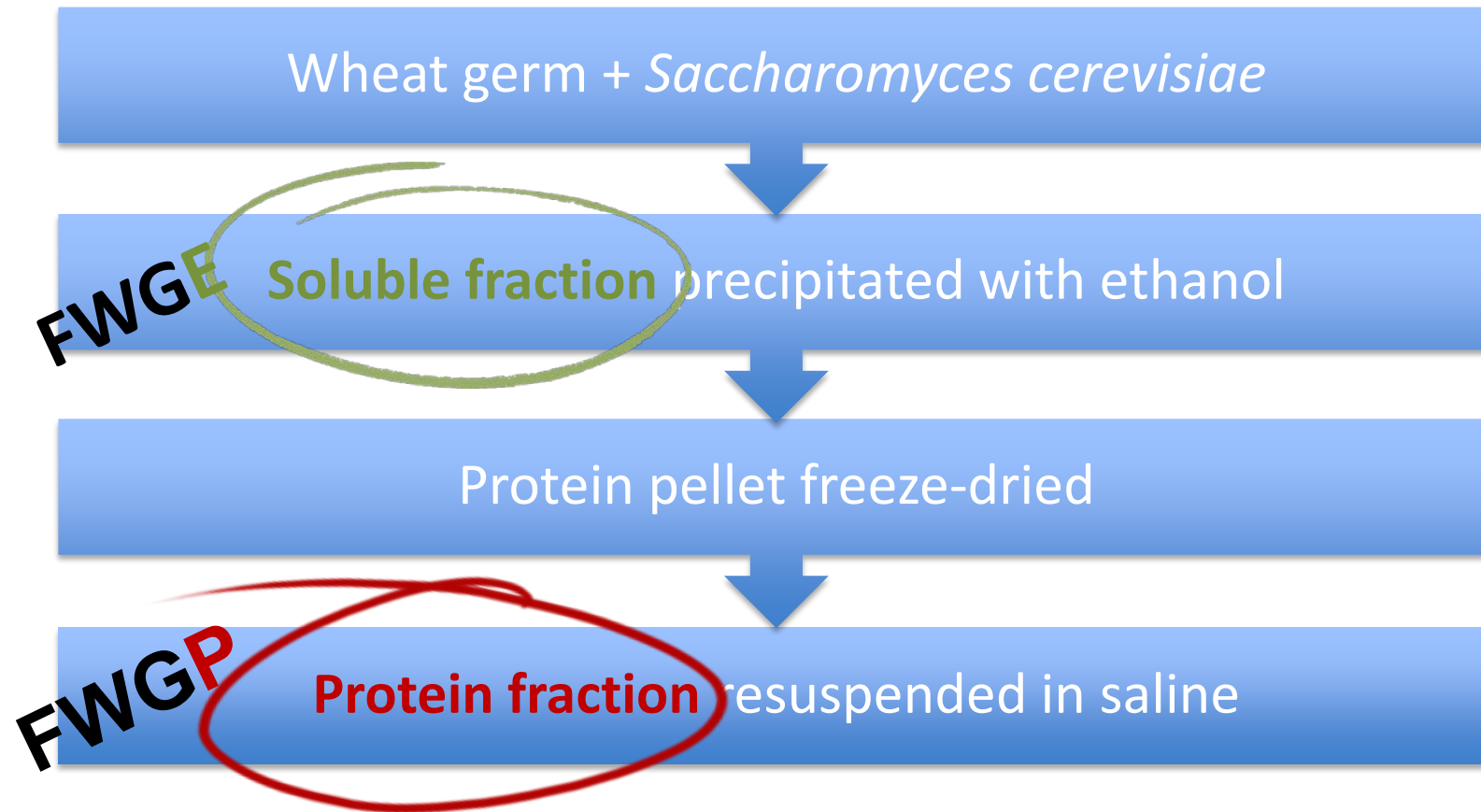


Table 1: IC₅₀s for FWGP

Cell line	Human tumor	IC₅₀ (µg/ml)
HCT-15	Colon	12
SNU-16	Gastric	12
DG-75	Burkitt's lymphoma	20
HCT-116	Colon	23
DLD-11	Colon	27
Raji	NHL	39
Chevalier	NHL	40
WSU-WM	NHL/Waldenstrom	42
Ramos	NHL	70
Sudhl4	NHL	70
A549	Lung	70
BM35	NHL	71
Granta519	NHL	80
H1650	Lung	144
DoHH2	NHL	171
HepG2	Hepatic	245
MCF-7	Breast	639

FWGP

In vivo efficacy

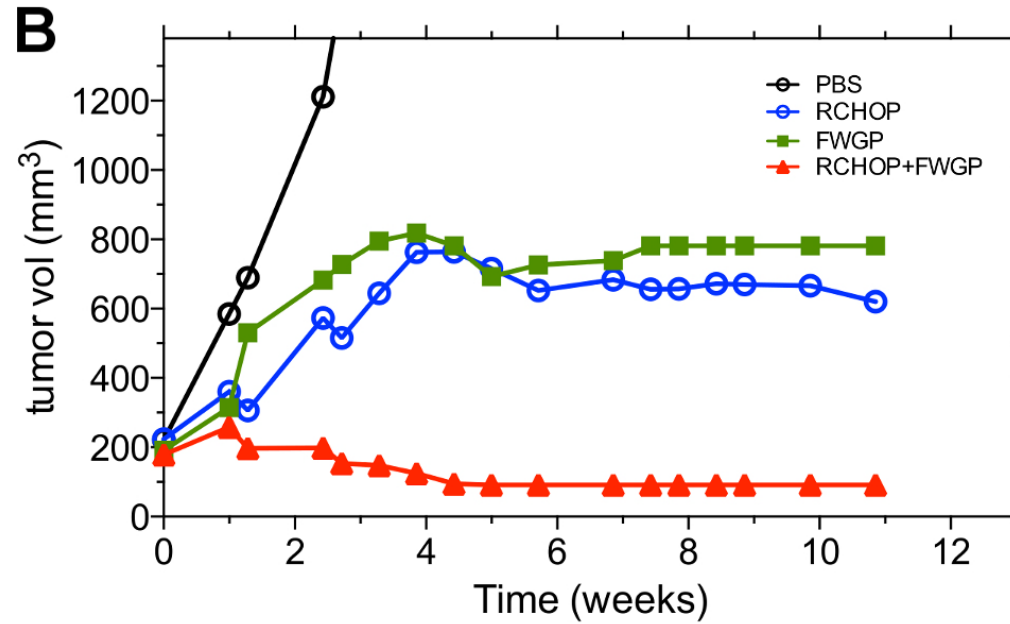


Figure 4: NK cell depletion abrogates FWGP activity in vivo

